



## Twin-Wall Panels: The Problem Solvers

The experts at KIBO Kunststoffe GmbH know high-impact polypropylene twin-wall panels – and the extrusion processes used to make them – inside and out. KIBO twin-wall panels solve problems. Whether you need high impact strength, flexural strength or compressive strength, ultralight weight, moisture resistance, outdoor weathering resistance and/or a wide service temperature range, the KIBO-H, -M and -X product portfolio offers flexible options for highest performance in your specific applications.



**KIBO**

# KIBO Twin-Wall Panels

KIBO Kunststoffe GmbH is a leading manufacturer of PP (polypropylene) twin-wall panels. KIBO twin-wall panels incorporate unique internal spacers formed with the walls in the manufacturing process. Three panel versions are offered, KIBO-H, -M and -X, each with different spacer configurations. Offering these spacers and other options to choose from, KIBO twin-wall panels are ideal for use in a wide variety of applications. Their level surfaces and extremely light weight make them outstanding materials for upscale point-of-sale displays and compact, lightweight packaging. With superb rigidity and strength, KIBO-X panels excel in portable heavy-duty structures for trade fairs and other commercial exhibits. KIBO Kunststoffe GmbH offers twin-wall panels as semi-finished stock and as prefabricated finished modules including floor protection panels and jobsite partitioning walls.

KIBO floor protection systems are used to protect high-end wood or stone flooring from damage during renovation work. In indoor and outdoor applications alike, KIBO modular wall systems serve as highly reliable site hoarding and dust control walls as well as pedestrian routing systems or posting surfaces for advertising or other information.

## Features, Benefits and Options



Identical in their basic materials properties, all three KIBO twin-wall panel versions are easy to process by cutting, drilling, welding, etc. All have outstanding chemical resistance, yet are recyclable and therefore environment-friendly. All provide excellent thermal and acoustic insulation while maintaining their form and function even at high ambient temperatures. The design characteristic in which KIBO-H, KIBO-M and KIBO-X differ is the spacer configuration between their walls.

- Outstanding impact resistance in spite of light weight
- Superb flexural and compressive strength, easy to process
- Excellent moisture and weathering resistance, wide service temperature range (-20 to +90 °C)
- Smooth, level surfaces
- Suitable for digital and/or screen printing
- Suitable for lamination with a variety of materials
- Highly durable, easy to clean
- Recyclable

Optional features:

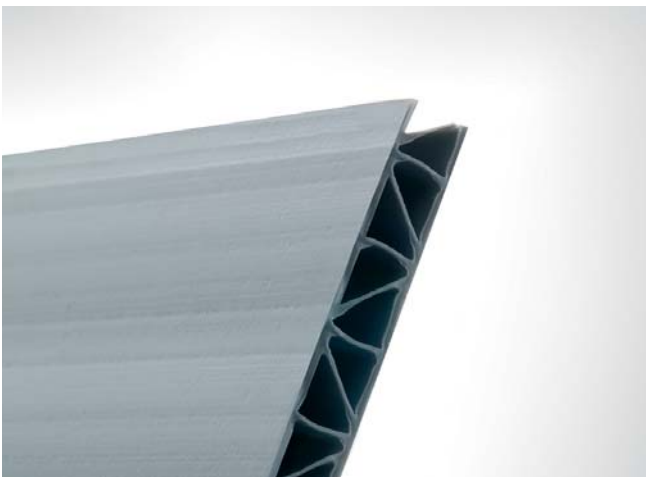
- Enhanced UV stability or flame resistance
- Anti-static or electrically conductive
- Corona treatment
- Glass-fibre or talcum reinforcement
- Two-colour coextruded panels
- Pre-cut blanks and custom formats
- Antibacterial

# Twin-Wall Panels



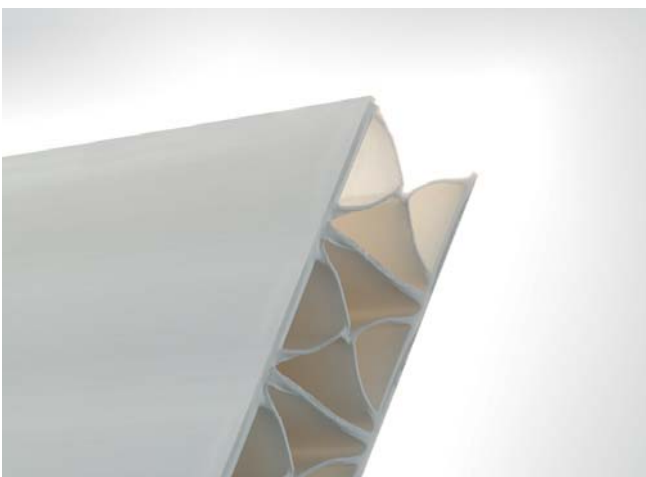
## **KIBO-H Panels: The Multifunctional Lightweight**

KIBO-H panels are the featherweights in the KIBO product family. Despite their extremely light weight, they are highly rigid and exceptionally well suited for a broad range of applications. Examples include protective packaging for transported goods, moisture barriers in building construction, protective floor coverings, gardening accessories, advertising billboards, commercial displays as well as a wide variety of uses in automotive interiors, toy manufacturing and model fabrication.



## **KIBO-M Panels: Unbeatably Rigid and Light**

KIBO-M panels incorporate vertical and diagonal spacers providing an unbeatable combination of lightness and rigidity. These versatile panels excel in a multitude of applications as protective transport packaging and packing partitions. In the advertising field, KIBO-M panels are used as lightweight carrier surfaces for posters and showcasing displays. In the trade show sector, KIBO-M has made a splash in the area of portable promotional elements for exhibition booths.



## **KIBO-X Panels: "X's" Inside – For XXL Jobs Outside**

KIBO-X is the professional for heavy-duty jobs and XXL applications such as large-scale banners, big structures for trade show booths or other commercial displays and jobsite wall systems. The vertical and "X"-shaped spacer structure within these PP twin-wall panels provides highest flexural strength with very low area weight. In the automotive sector, KIBO-X panels excel in assembly-line part carriers and as interior finishing in vehicles of all types including lorries, trucks, motor homes and caravans.

# Examples of Applications



Poster panels/displays, compact packaging/transport boxes, weed control shields



Package inserts/partitions, advertising boards, heavy-duty transport boxes



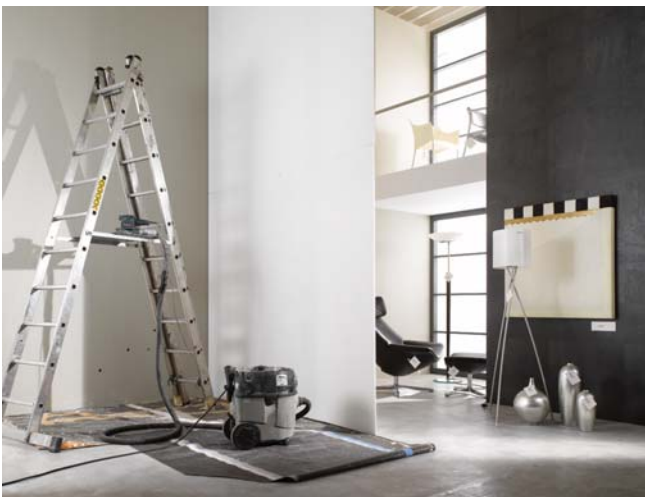
Billboard panels, pallet sleeves, dust control partitions

# Prefabricated Systems



## Floor Protection Systems

Quick and easy to install, temporary floor covering systems made from KIBO twin-wall panels provide highly effective protection over wood (parquetry, floorboards etc.), stone (marble, slate etc.) or other easily-damaged flooring during construction or renovation work. Designed to take a beating and come back for more, they have high compressive strength and impact strength, outstanding moisture and rotting resistance as well as smooth, floor-friendly surfaces. With these properties, they live up fully to the name: "floor protection system".



## Dust Control Wall Systems

Offering users convincing advantages such as high flexural, compressive and impact strength in addition to their light weight, KIBO twin-wall panels are ideal dust control partitions for indoor construction, remodelling or renovation. Fully recyclable and therefore environment-friendly, they are easily adapted to specific site dimensions and can be reused again and again. To sum it up: they save costs and put money in your company's pocket.



## Site Hoarding Systems

KIBO twin-wall hoarding systems provide users clear advantages with their easy and cost-efficient storage and transport. Their surprisingly light weight and ease of handling radically reduce the need for equipment and personnel as compared to conventional site hoardings. With outstanding resistance to moisture, rotting and outdoor weathering, they are eminently well suited as hoardings around building construction and civil engineering jobsites. Whether used indoors or outdoors, KIBO site hoarding systems reliably cordon off the worksite, keeping out unwanted intruders and minimizing disturbance of the surrounding environment.

# Product Programme

## KIBO-H Panels

Thickness, approx. (mm)	Area weight, approx. (g/m <sup>2</sup> )
2.0	280 / 350 / 400
2.5	350 / 450
3.0	450 / 600 / 800
3.5	650 / 800
4.0	680 / 800 / 1000
4.7	1000
5.0	1060 / 1250 / 1500
6.0	1750 / 2000

## KIBO-M Panels

Thickness, approx. (mm)	Area weight, approx. (g/m <sup>2</sup> )
5.0	1250 / 1500
6.0	1500 / 1800
27.0	4000

## KIBO-X Panels

Thickness, approx. (mm)	Area weight, approx. (g/m <sup>2</sup> )
8.0	2000
9.0	1750 / 2000
10.0	1800 / 2000 / 2500 / 2700
12.0	2700 / 3000
13.0	3000 / 3500

## Next-Loop! The Cost-Saving Idea for Our Environment

KIBO twin-wall panels are known throughout the industry for their outstanding quality and exceptional workmanship. This is a result of uncompromising quality assurance starting with incoming raw materials and extending through the entire manufacturing process to the finished products leaving the plant. However, even the best panels and products can on occasion be damaged or in fact destroyed by improper use. Responding to this situation, KIBO offers their exclusive "Next-Loop!" service.

Whether opting for repair, replacement or recycling of damaged panels, customers benefit from this service in several different ways. The panels stay in use for longer time periods, therefore reducing the need for new purchases. This helps protect our environment and conserve natural resources. Customers benefit as well from low repair costs, savings on replacement panels or credits for returned panels – i.e. an environmental bonus.



A further feature: "Next-Loop!" services are provided not only for KIBO products but also for almost all types of similar polypropylene panels.

# Our Promise

At KIBO, we focus on coming up with new, surprising ideas – today we're thinking about your requirements for tomorrow. In looking for new ways to solve your problems, we are not afraid to take unconventional paths, relying on imagination for uncommon solutions along with courage to travel uncommon routes. By keeping our eyes open and constantly learning more, we break through barriers and set new standards. True to our roots as a family-owned company, we listen exactly to what you have to say and attach utmost importance to fairness in our business relationships. At KIBO, our employees, customers and suppliers are fully committed with their hearts and their minds and work together as partners.

## KIBO Kunststoffe GmbH

Heinrich-Schickhardt-Straße 1

72221 Haiterbach (Germany)

Telephone: +49 - (0)7456 - 915791

Telefax: +49 - (0)7456 - 915792

info@kibo-kunststoffe.de

www.kibo-kunststoffe.de



Management  
System  
ISO 9001:2008

www.tuv.com  
ID 9105037370

